



County Planning Commission

CITY OF MITCHELL SHOOTING RANGE CONDITIONAL USE

Discussion Points

- Project History
- Proposed Shooting Range
- Operations and Safety Measures
- Other Shooting Ranges

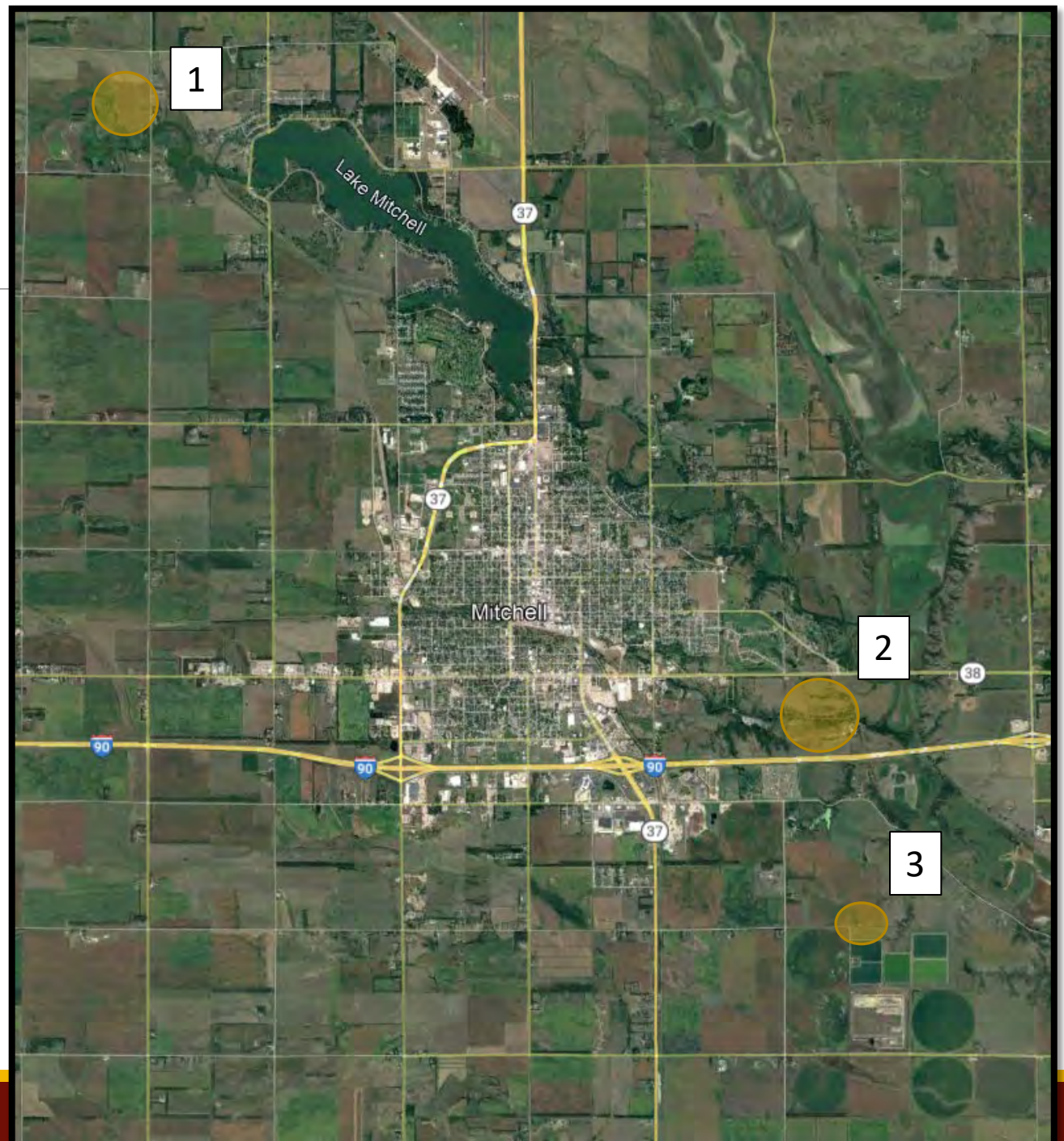
Project History

- April 2022 – Initial Meeting
- November 21, 2022 – City Council approves an agreement with Civil Design Inc. (CDI) from Brookings
- CDI's work is completed in July 2023
- August 7, 2023 – City approves applying for GF&P Grant

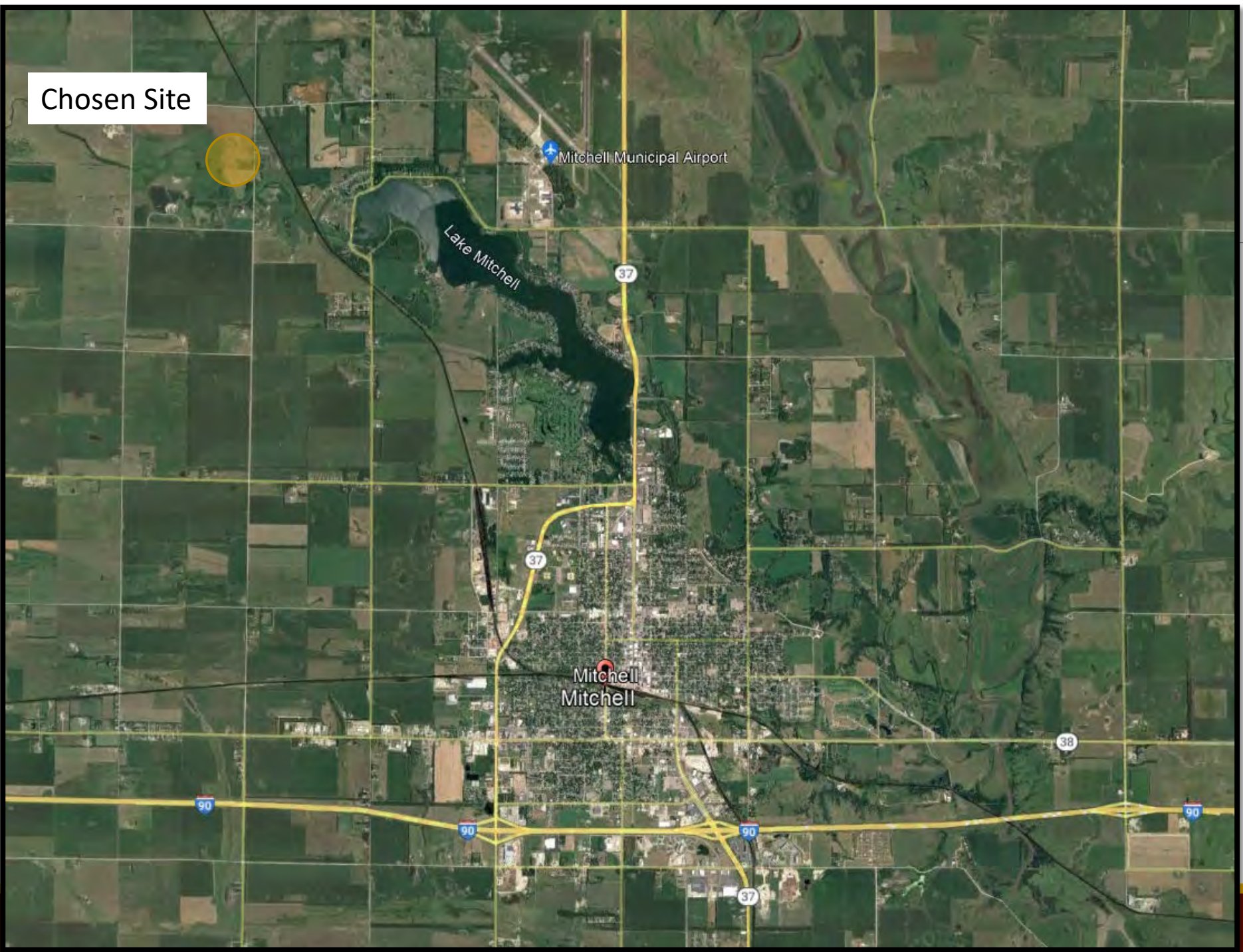
Project History

Considered Locations

- 1. – NW ¼ S36, T104, R61
- 2. – Old Landfill
- 3. – WWTP

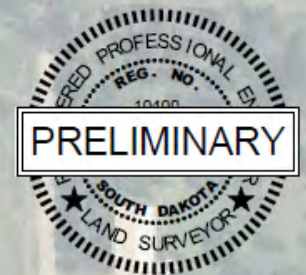
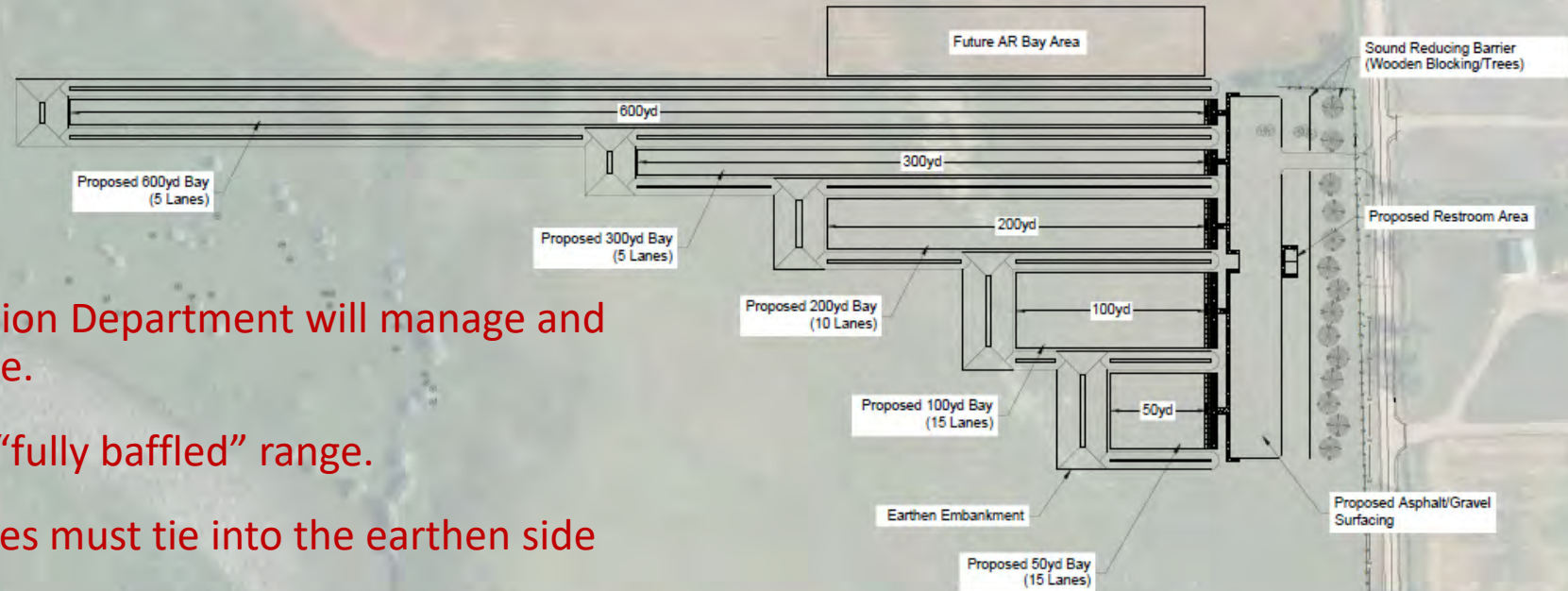


Chosen Site



Proposed Site

- Parks and Recreation Department will manage and maintain the range.
- The site will be a “fully baffled” range.
- All overhead baffles must tie into the earthen side berms.
- The range will be gated and have 24-hour video surveillance for safety purposes.
- Range flags will be utilized to notify people when the range is in use.



Mitchell Area Shooting Complex

GENERAL RULES

- Hours of Operation: May—September, 8 AM to 8 PM
- Hours of Operation: October—April, Sunrise to Sunset
- Types of firearms permitted at the outdoor shooting range; center-fire and rim-fire rifles, center-fire and rim-fire handguns, muzzle loaders, air rifles and air pistols.
- Shotguns are not allowed.
- Fully automatic weapons, and all armor piercing, explosive, tracer or incendiary rounds are prohibited.
- Range users under 18 years of age must be accompanied and individually supervised by a parent or guardian at all times. The parent or guardian is responsible for the actions of a young person under their supervision while at the shooting complex.
- Targets such as explosive or incendiary targets are prohibited.
- Ground level targets are not authorized, shoot only at paper targets or provided targets.
- Remove paper targets from backstops when done shooting.
- Metal “gong” style targets, except as provided in established berms, are prohibited on public use days.
- Clay target shooting is prohibited.
- Muzzles pointed down range at all times.
- Let others know when going “hot”.
- All firearms must remain unloaded with actions open except on firing line.
- Absolutely no night/dark shooting activity from sunrise to sunset unless a special event has been issued by the City.
- Alcoholic beverages or illegal drugs are not allowed on the shooting complex at any time.
- All wildlife and domestic animals are prohibited on the range facilities. The shooting or harassment of any animal is strictly prohibited.
- No camping or campfires allowed.
- No shooting in the parking lot or non-designated areas.
- All federal, state, and local firearms laws must be obeyed.
- All shooters are responsible for their guns and ammunition while on the property.
- Shooters will conduct themselves in an orderly manner at all times.
- Pick up any trash prior to leaving.
- Those acting in an unsafe manner, shooting irresponsible or violating any of the rules will be removed from the facility.
- No ATVs shall be permitted outside of the parking lot area unless a special event has been issued by the City.

100 YARD RANGE RULES

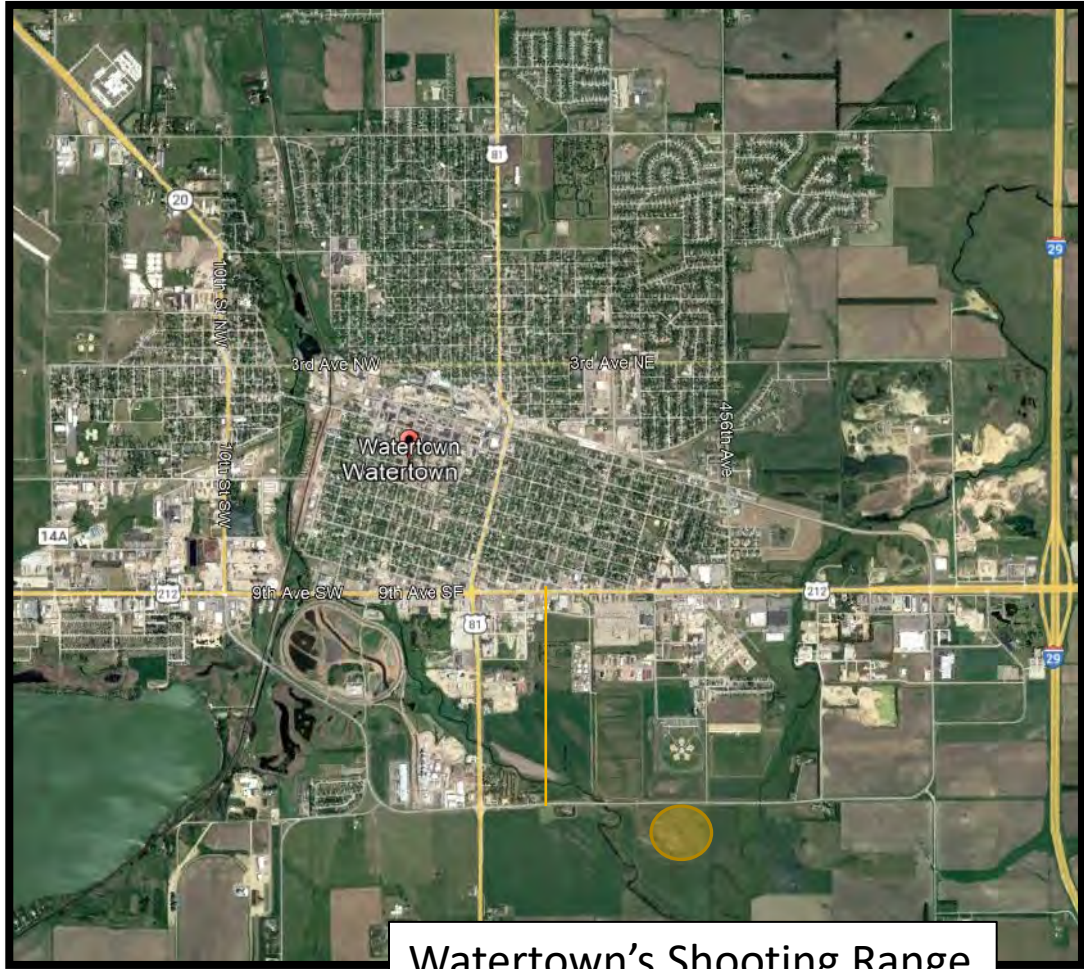
- Ground level targets are not authorized. Shoot only at paper targets on backstops provided.
- Shooting in non-designated area is strictly **PROHIBITED.**
- Shooting will be performed only in the designated shooting areas. Shooting benches are provided at the firing line. No shooting in front of or behind marked firing line.
- Shooting across target positions is **PROHIBITED.**
- No shooting of posts or structures!
- Do not shoot at backstop frames, baffles, side berms or bottles.

300 YARD RANGE RULES

- Targets are Audible Metal targets Only. **No Person** is allowed to walk downrange to the 300 Backstop.
- Shooting in non-designated area is strictly **PROHIBITED.**
- Shooting will be performed only in the designated shooting areas. Shooting benches are provided at the firing line. No shooting in front of or behind marked firing line.
- Shooting across target positions is **PROHIBITED.**
- No shooting of posts or structures!
- Do not shoot at backstop frames, baffles, side berms or bottles.

HANDGUN RANGE RULES

- Shooting shall be from a fixed firing line only.
- Targets must be set to a height such that when the round passes through the target, it impacts into the rear berm without a ricochet.
- All angle firing is prohibited at the hand gun range; shooting across target positions is **PROHIBITED**.
- No ground level targets allowed.
- Clay target shooting is **PROHIBITED**.
- Do not shoot at backstop frames, baffles, side berms, bottles or trash.
- No drawing from a holster.
- Possession of a handgun(s) by a person(s) under the age of 18 is **PROHIBITED** unless:
 - Minor is in the presence of the minor's parent or guardian.
 - Minor is in the presence of a licensed or accredited firearm safety instructor.



Watertown's Shooting Range



Proposed Shooting Range Location

Existing Trap Range



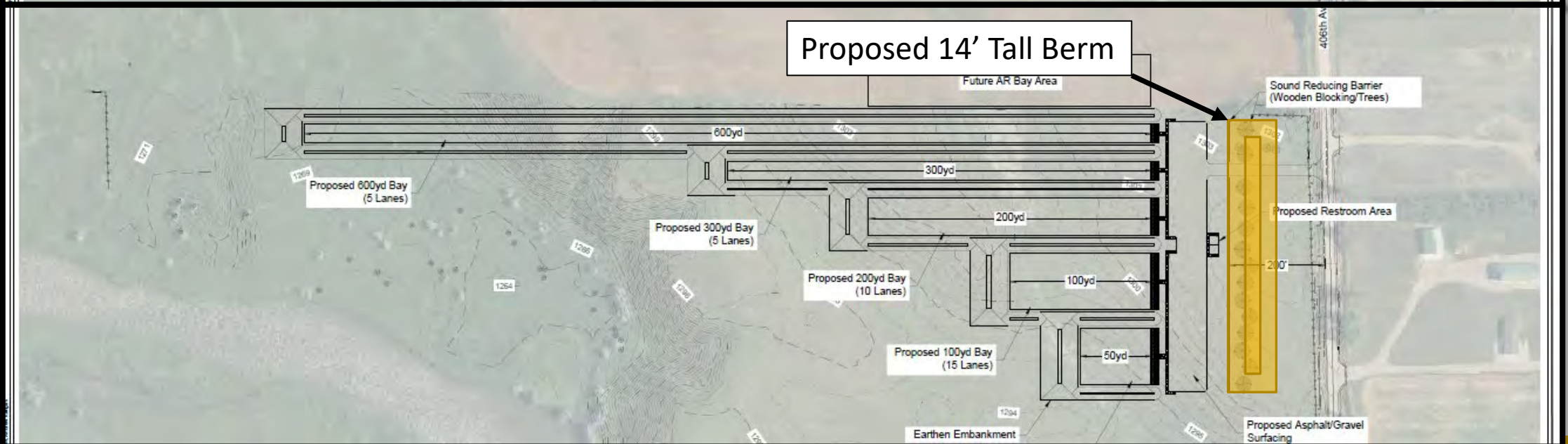
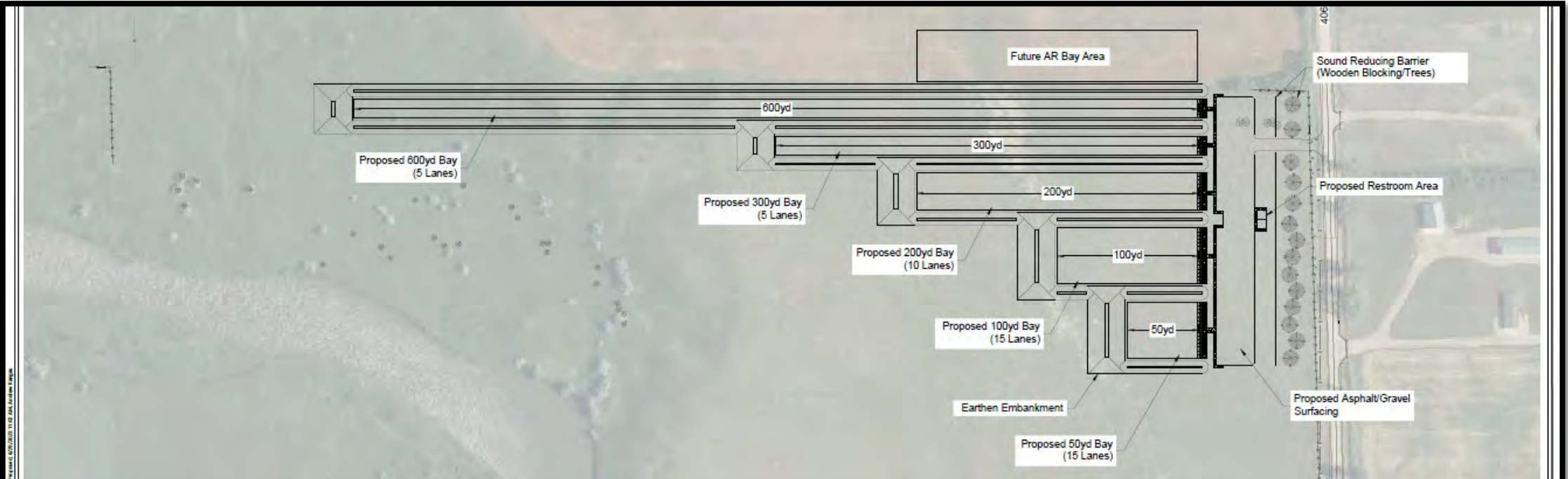














Conditions

- Start a Committee for the Range
- Blotter Coat 406th Ave from 252nd Street to 249th Street
- Extend the conditional use expiration date beyond two years to accommodate GF&P grant application, permitting process and construction.

Supporting Organizations

- Game Fish and Parks
- Ducks Unlimited
- Rocky Mountain Elk Foundation
- Powderhorn Ranch Regulators
- Dakota Territory Gun Collectors Association
- Quick Draw Shooters
- Army National Guard
- Friend of NRA – Mitchell Chapter
- Davison County Shooting Club

Questions?
