

1. West End Lake Boat Ramp
 - a. -98.057 43.7544 decimal degrees



2. Amphitheatre-On southeast corner of lake, just east of cemetery/golf course.
 - a. -98.0321 43.736 decimal degrees



3. Mitchell Middle School-Southeast corner of School grounds
 - a. -98.0344 43.7173 decimal degrees



4. Northridge Park-Northeast of the High School
 - a. -98.0142 43.72 decimal degrees



5. Jennewein Park-(SE corner of park) Corner of W. Williams AVE. and S Minnesota St.
a. -98.0346 43.6982 decimal degrees



6. Hitchcock Park-NW Corner of park
 - a. -98.012 43.7081 decimal degrees



7. Cabela's-Located between Cabela's and Walmart.
a. -98.0111 43.6879 decimal degrees



8. Mattie Street-Just north of 1st St.
a. -97.9967 43.7098 decimal degrees



9. Soccer Complex-Southeast corner of complex
a. -98.0431 43.764 decimal degrees



10. Mt. Vernon Fire Department

a. -98.261 43.7115 decimal degrees

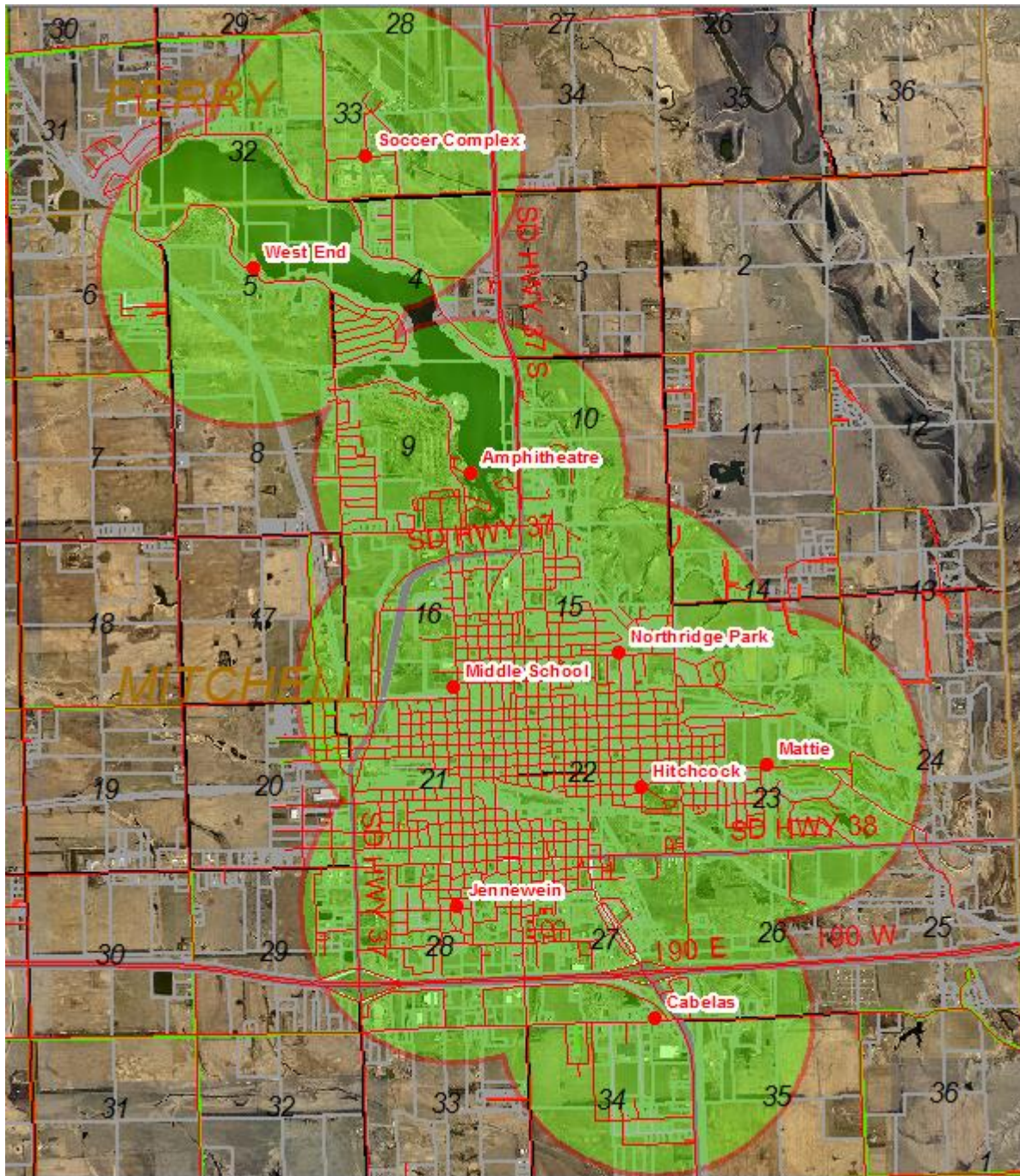


11. Ethan Fire Department

a. -97.985 43.5478 decimal degrees



Siren locations in Mitchell, SD with a 5,000 feet hearing range.



Siren location in Mt. Vernon, SD with a 5,000 feet hearing range.



Siren location in Ethan, SD with a 5,000 feet hearing range.

