

Davison County Master Transportation Plan

Public Meeting and Open House

Davison County

MASTER TRANSPORTATION PLAN

June 4, 2015



Introductions

- Study Partners
 - South Dakota Department of Transportation
 - Federal Highway Administration
 - Davison County
- Study Consultant
 - HR Green, Sioux Falls, SD
- Study Advisory Team
 - Davison County Commission
 - Davison County
 - City of Mitchell
 - South Dakota DOT

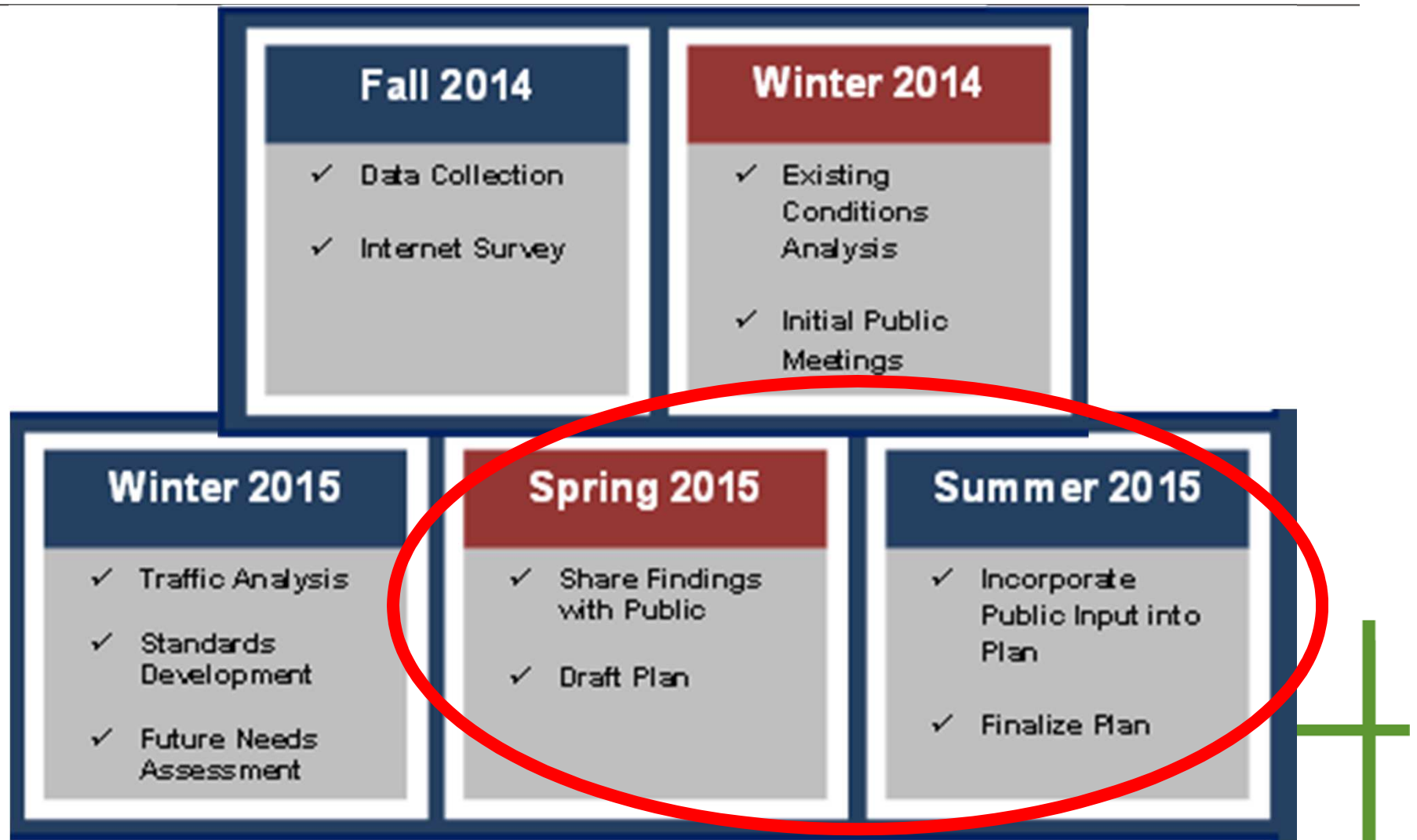


Study Objectives

1. *IDENTIFY transportation network issues and needs*
2. *DEVELOP feasible solutions to address current and forecasted issues and needs*
 - *PROMOTE a livable community*
 - *ENHANCE economic and social well-being*
3. *CREATE final products for Davison County and the SDDOT*
 - *Recommended improvements*
 - *Guidance for implementation and reacting to future development*



Study Timeline: Sept 2014 – July 2015



Purpose of Today's Meeting

- Provide an overview of findings and recommendations
- Establish need for prioritization
- Present the current County funding and future funding opportunities
- Seek input on recommendations, findings, priorities, and funding



Davison County Master Transportation Plan Highlights

Major Roads Plan

Preservation and Maintenance Plan

Bridge Plan

Proposed Projects



Master Transportation Plan Document

- Overview provided through meeting display boards
 - Located throughout room
 - Posted online for review

Davison County
MASTER TRANSPORTATION PLAN

Public Open House

Welcome

Presentation at 5:45 pm

Please Sign-in at the Registration Table






Davison County
Mitchell, South Dakota



Major Roads Plan



The Davison County Master Transportation Plan proposes a Major Roads Plan developed in partnership with Davison County and SDDOT staff. The Major Roads Plan uses common terminology and classification characteristics to maintain consistent linkages between roadway type, establish design guidance and standards, and identify future funding opportunities.


Priority routes within Davison County are primarily roadways identified as **Major Collectors** in the County Roadway Classification. These roadways support county-wide and regional trips and typically carry the greatest traffic volumes of County jurisdiction roadways. The priority routes also provide continuity along regional roadways for trips destined for counties surrounding Davison County.

As the primary traffic carriers within the County roadway system, the identified routes will have priority for improvements and maintenance as the County outlines projects and implementation for the future.

← The Major Roads Plan (left) categorizes roadways based on a County Roadway Classification System to establish design standards, provide consistent linkages, and prioritize transportation system needs.

Legend

County Roadway Classification	Interstate	Rail Lines
Major Collector	State Highways	Rivers & Streams
Minor Collector	Township Roads	Cities
County Local	County Local	Study Area (Davison County)

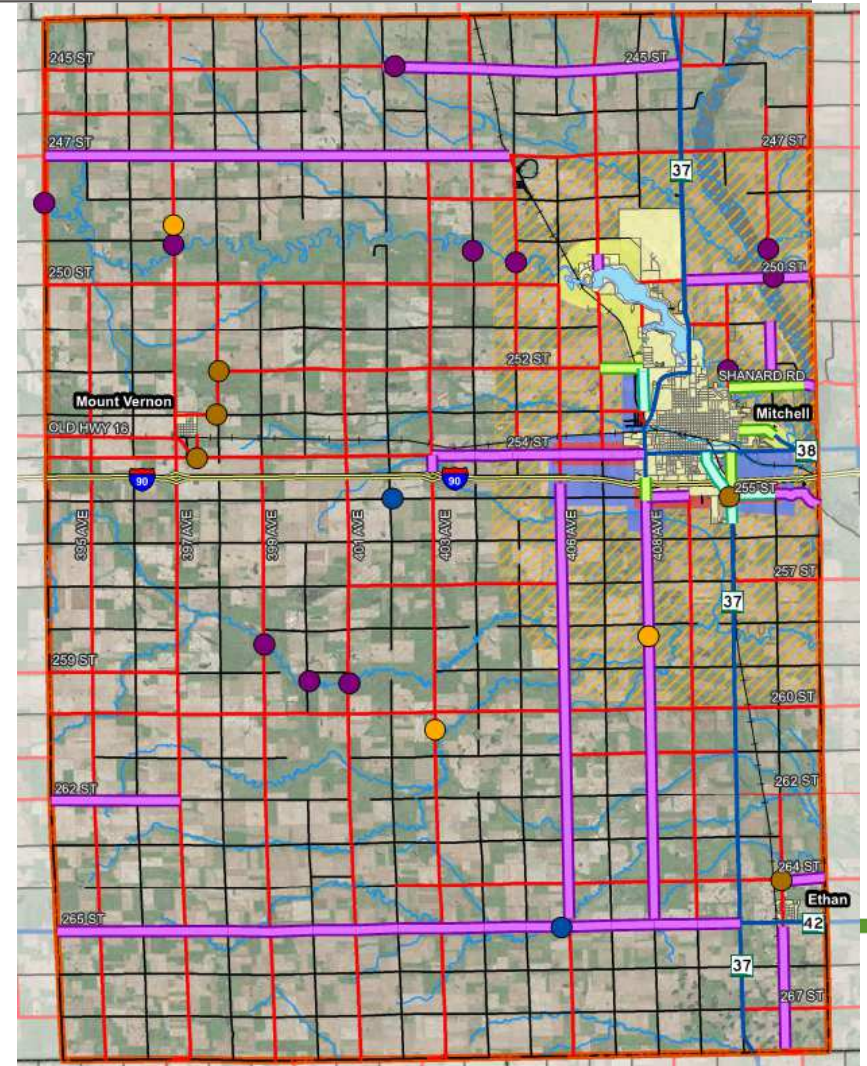


↑ The mobility to access relationship shown in the figure (above) demonstrates that as vehicle mobility increases property access decreases and as mobility decreases property access increases.

Davison County
MASTER TRANSPORTATION PLAN

Stakeholder and Public Meetings #1

- Issues and Needs Map
- Transportation Survey Results
- Summary posted online



Priority Routes – Major Roads Plan

Recommendation: Establish Prioritized Routes

- Provides the Foundation for Assessment and Recommendations throughout the Plan
- Promote Connectivity and Continuity (Locally and Regionally)
- Prioritize Bridge Improvements
- Establish Basis for Land Access
- Establish Respective Design and Policy Guidelines





Major Roads Plan

State Highway



County

Major Collector
(approximate)



Priority Routes

East-West

247th Street

254th Street/Old Hwy 16

265th Street

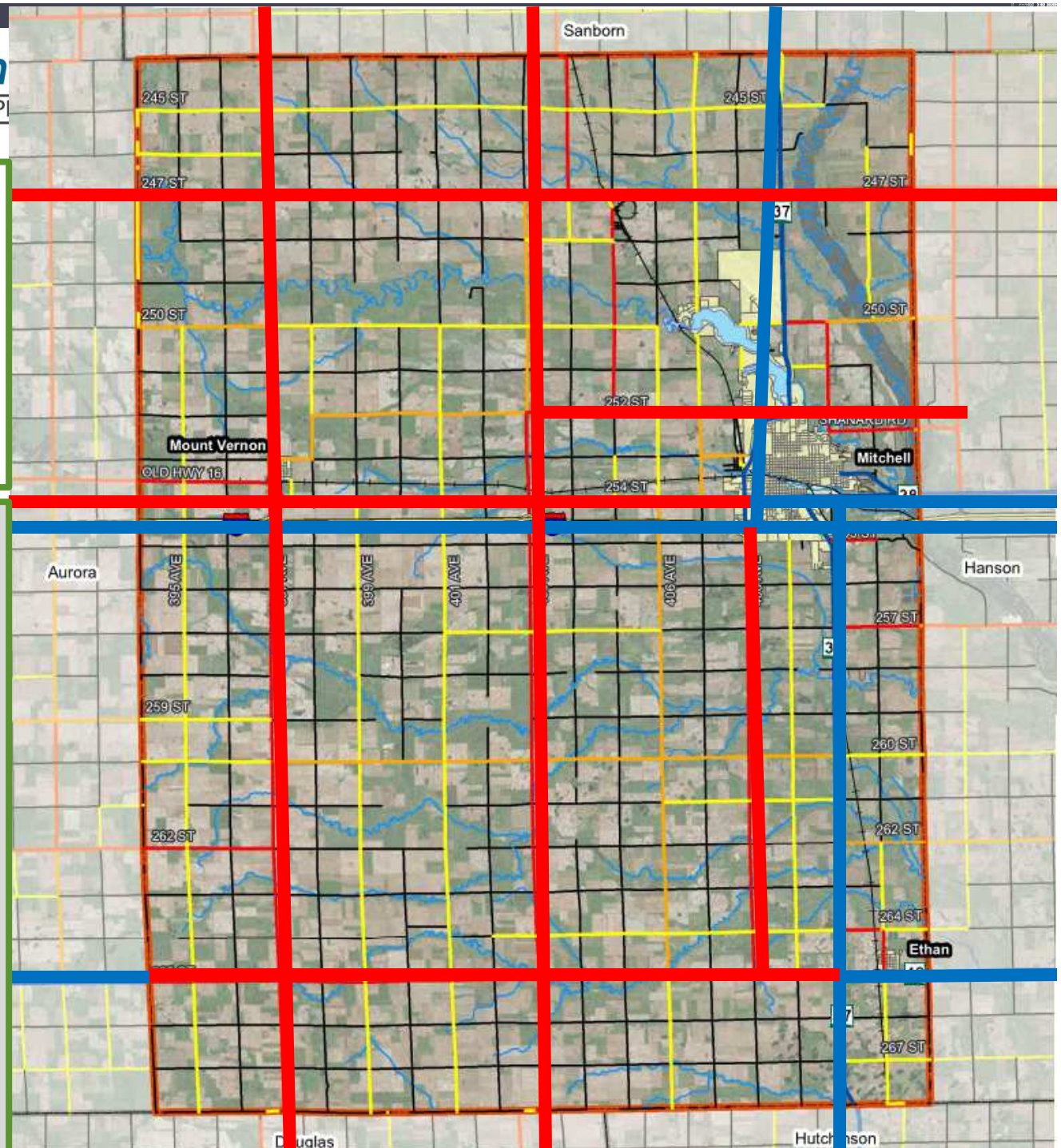
North-South

397th Avenue

403rd/405th/404th
Avenues

408th Avenue

Mitchell Urban Fringe



Roadway Preservation and Maintenance Plan

- Recommendation:
Provide Systematic
20-Year Planning of
Current System
 - Mileage per surface
 - Last major investment
 - Last surface treatment
 - 20-Year segment costs

	Existing County System (miles)
Asphaltic Concrete	138
Blotter	35
Concrete (PCC)	6
Gravel	<u>153</u>
Total	332
2015 Annualized Cost	\$5,550,000

Bridge Plan

- Assessment of Existing Conditions
- 88 County-maintained bridges
 - 54 bridges are 50+ years old (of 124)
 - 27 bridges are less than 25 years old (of 124)

	Number of Bridges	Total Cost per Category (2015 \$)
Replacement	7	\$1,850,000
Approaching Replacement	15	\$5,210,00
Totals	22	\$7,060,000



Bridge Plan – Priority Rating System

- Recommendation: Provide a Systematic Priority Rating System for Bridge Replacement
 - Ensure flexibility to tailor approach and react to changing conditions
 - Does not indicate ‘need’ for immediate replacement
 - Does not supplant requirements for Federal funding
- Sufficiency Rating
- Traffic Volumes
- Detour Length
- Current Weight Restrictions
- Bridge Width
- Bridge Length
- Major Roads Plan Priority Route
- Key Industry/Traffic Generator Route

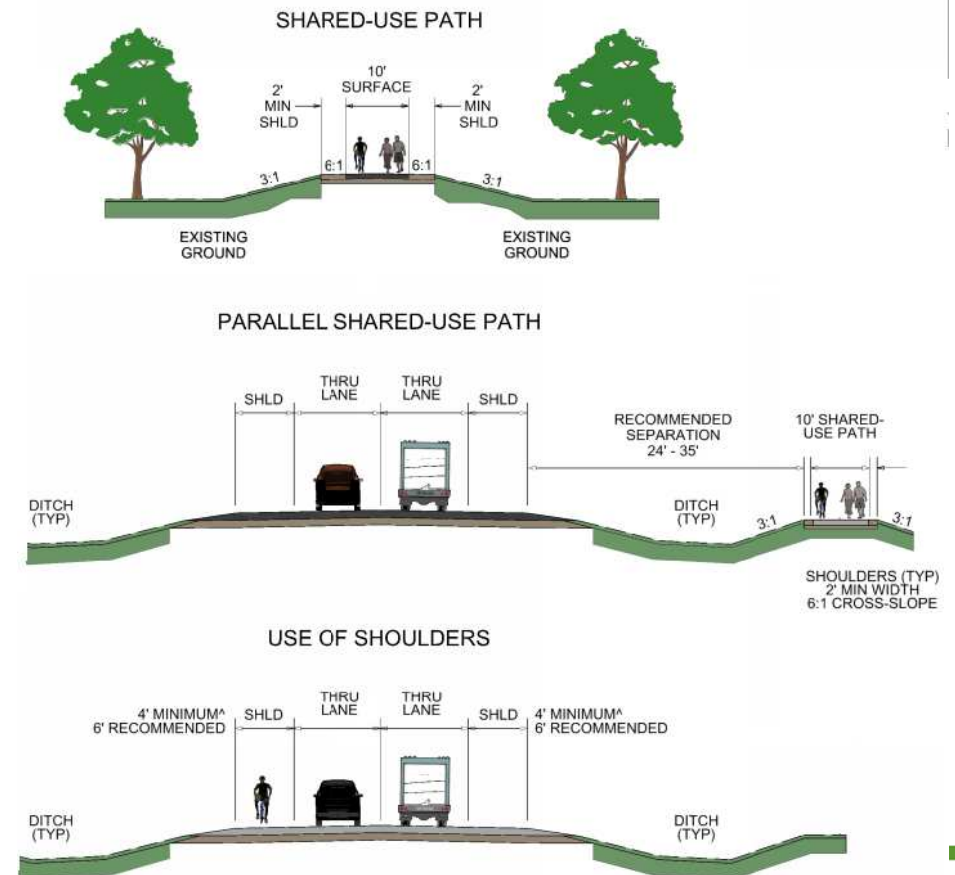
Priority Rating System:

- 1. James River Bridge on 250th Street**
- 2. Firesteel Creek Bridge on Foster Street**



Multimodal Projects


- Recommendation:
Facilitate Planning and Accommodation of Rural Multimodal Opportunities
- Includes:
 - Input from Palace City Pedalers
 - Establishment of Design Guidelines
 - Identification of Future Projects



Proposed Projects (47)

- Project Categories:
 - Intersections (10)
 - Roadway Segments (28)
 - Multimodal Network Enhancements (9)
 - System Management and Development Policy
 - Bridge Projects (Prioritized List)
- Prioritization
 - Short Term (0-10 years)
 - Medium Term (11-20 years)
 - Long Term (20+ years)

**Will also be
posted online for
your review and
comment!**



Davison County Master Transportation Plan

Historical Budgets and Future Funding



Davison County Highway Budget

- 2013: \$2,991,456 (spent)
- 2014: \$2,893,904 (spent)
- 2015: \$3,247,965 (budget)

- Project and Materials Related Line Items:
 - \$1.47 - \$1.87 million

1 mile of Asphaltic Concrete Overlay costs approximately \$185,000



Total Identified Needs – Existing Network

- Roadway Preservation and Maintenance
- Bridges
- Short Term Projects
- Annualized Road and Bridge Needs: \$7.6 million
(2015 \$)



Road and Bridge Fund Revenue* (2014)

	2014 Revenue	
Wheel Tax	\$214,545	
Motor Vehicle Licenses	\$1,501,555	
Motor Fuel Tax	\$7,400	
Other	\$432,206	
<i>General Fund Transfer</i>	\$600,000	<i>Identified Needs: \$7,600,000</i>
Total	\$2,755,706	

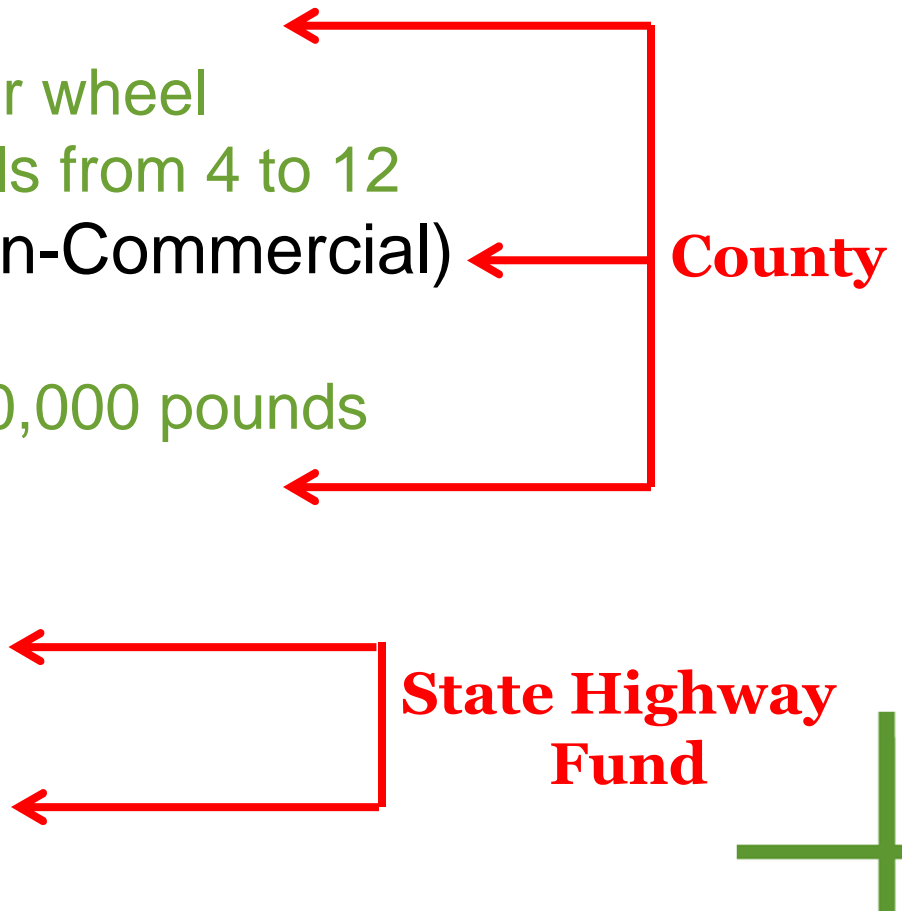


2015 Transportation Funding Bill

- Effective April 1, 2015
- Additional Funding for Counties:
 - Direct (retained)
 - Local Government Highway and Bridge Fund
 - Local Bridge Improvement Grant (BIG) Fund
 - \$15 million/year
- 5-Year Plan for BIG Fund Eligibility

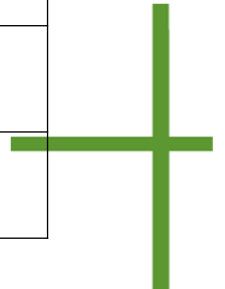


2015 Funding Bill Overview

- Wheel Tax
 - Increase from \$2 to \$5 per wheel
 - Increase number of wheels from 4 to 12
 - Vehicle License Fees (Non-Commercial)
 - Fee increase of 20%
 - Increase for those over 20,000 pounds
 - Property Tax Levy Option
 - Counties and Townships
 - Motor Vehicle Fuel Tax
 - 22 to 28 cents per gallon
 - Motor Vehicle Excise Tax
 - Increase from 3% to 4%
- 
- County**
- State Highway Fund**

Historic and Possible Revenue

	2014 Revenue	Estimate with Fee Increases
Wheel Tax	\$214,545	+ \$340,000
Motor Vehicle Licenses	\$1,501,555	+ \$300,000
Motor Fuel Tax	\$7,400	-
Other	\$432,206	-
Property Tax Levy	\$0	<i>Not established</i>
County Sales Tax	\$0	<i>Not established</i>
<i>General Fund Transfer</i>	\$600,000	-
Total	\$2,755,706	+ \$640,000*



So, What Does This All Mean?

- Current system is likely not sustainable at current funding
- County has done a good job to date, but roadway construction costs have significantly increased over previous decade
 - 7-20% per year in last five years
- Effects of major projects and limited funding are likely going to be felt soon:
 - Bridges (i.e. James River Bridge)
 - Historically paved roadways (i.e. 397th Avenue)



Your contribution today...

Help us fine-tune the priorities and projects for Davison County

- Major Roads Plan Approach and Routes
- Selection and Prioritization of Projects
- Priorities for Roadways and Bridges

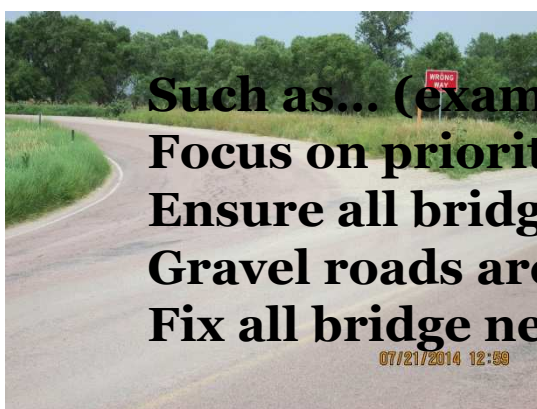
Such as... (examples)

Focus on priority routes first

Ensure all bridges remain open first

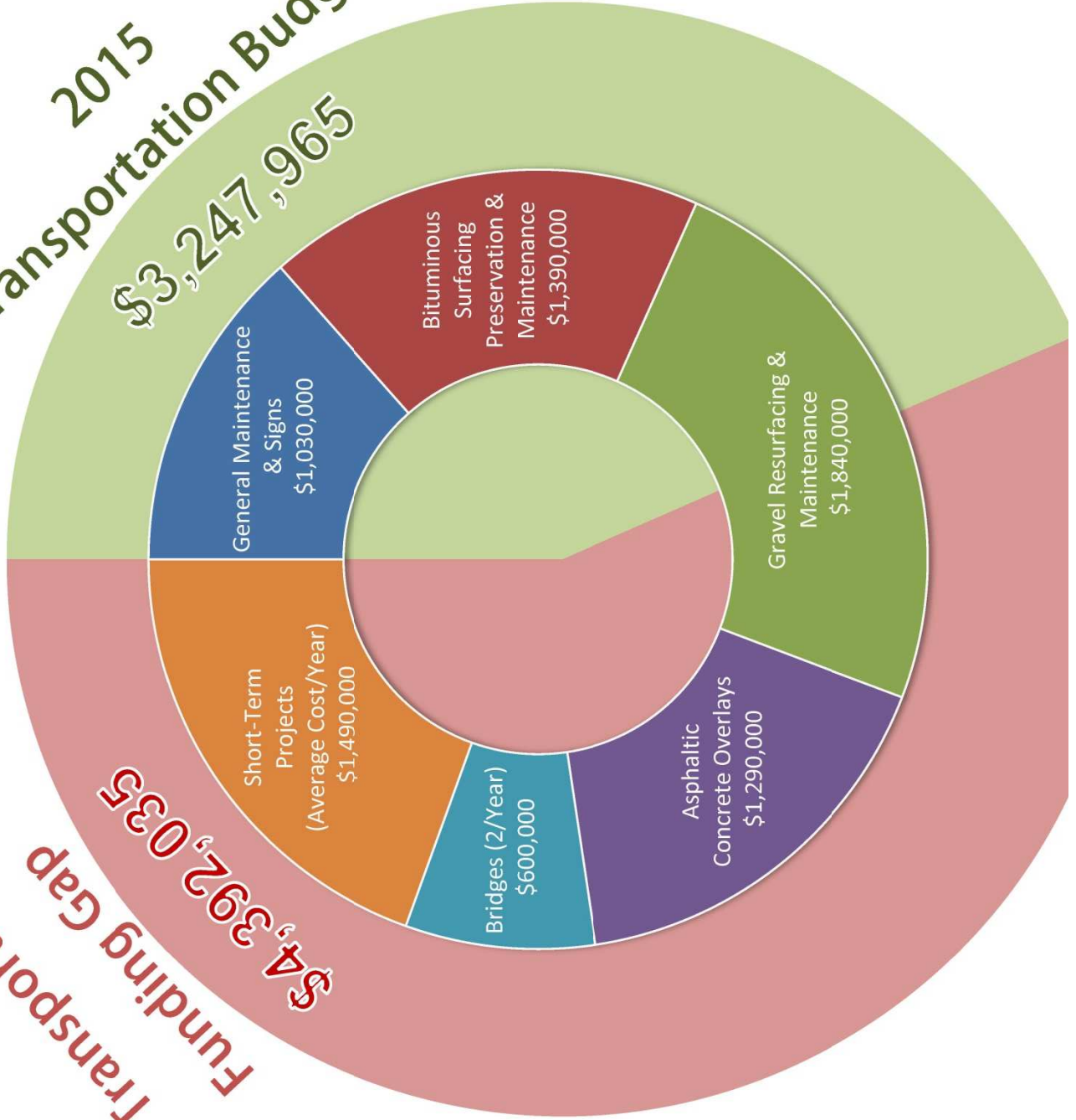
Gravel roads are OK as long as bridges and connections remain

Fix all bridge needs first, as quickly as possible



2015
Transportation Budget
\$3,247,965

2015 Transportation
Funding Gap
\$4,392,035



Evaluated Surfacing Changes (miles)

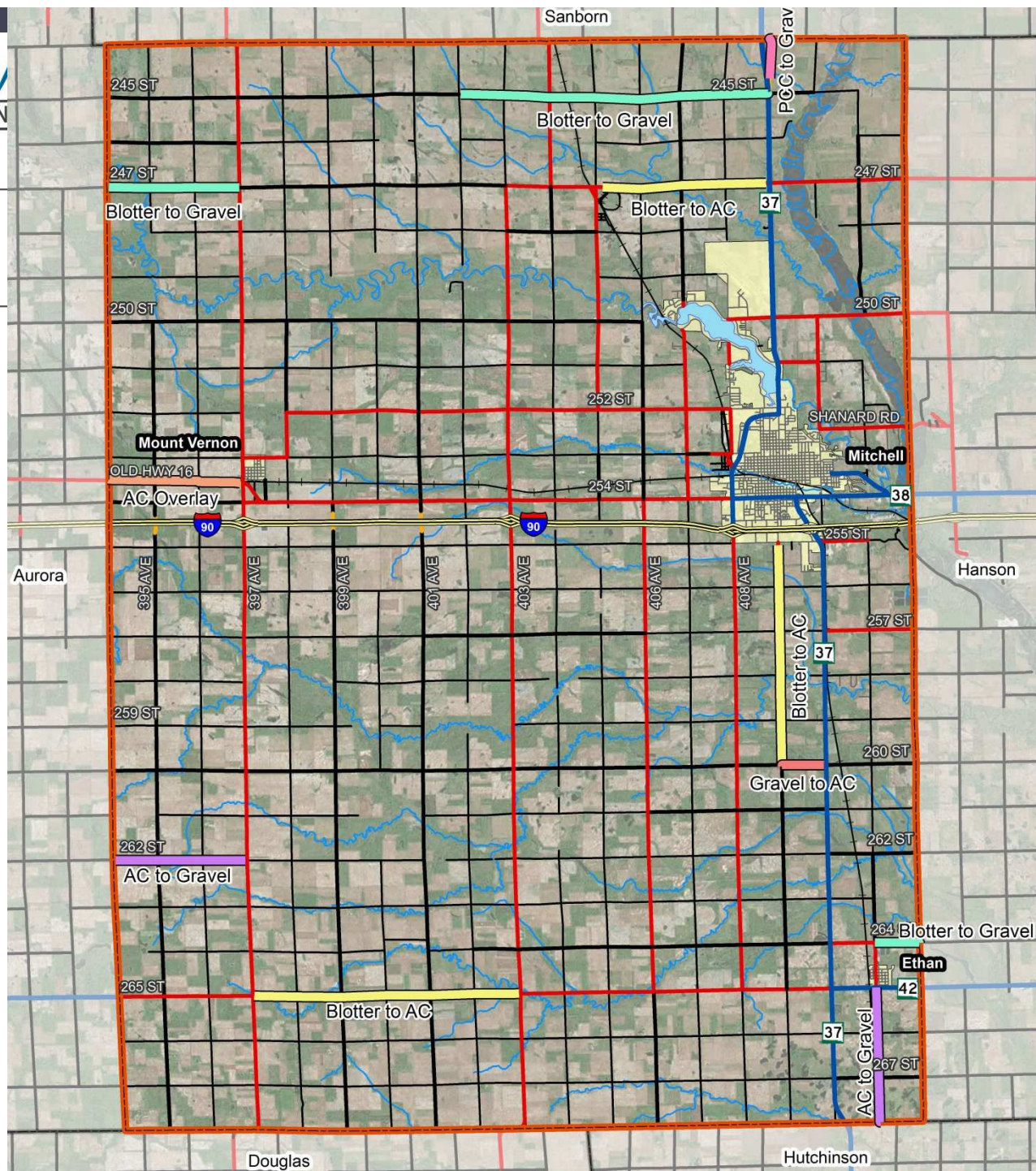
AC to Gravel: 6

Blotter to Gravel: 11

Gravel to AC: 1

Blotter to AC: 15

AC Overlay (PCC): 3





Thank You!

Project Website:

www.davisoncounty.org/departments/highway-dept/

Please complete a comment form before leaving!

**Public Meeting Comment Period Open Through
June 19, 2015**

