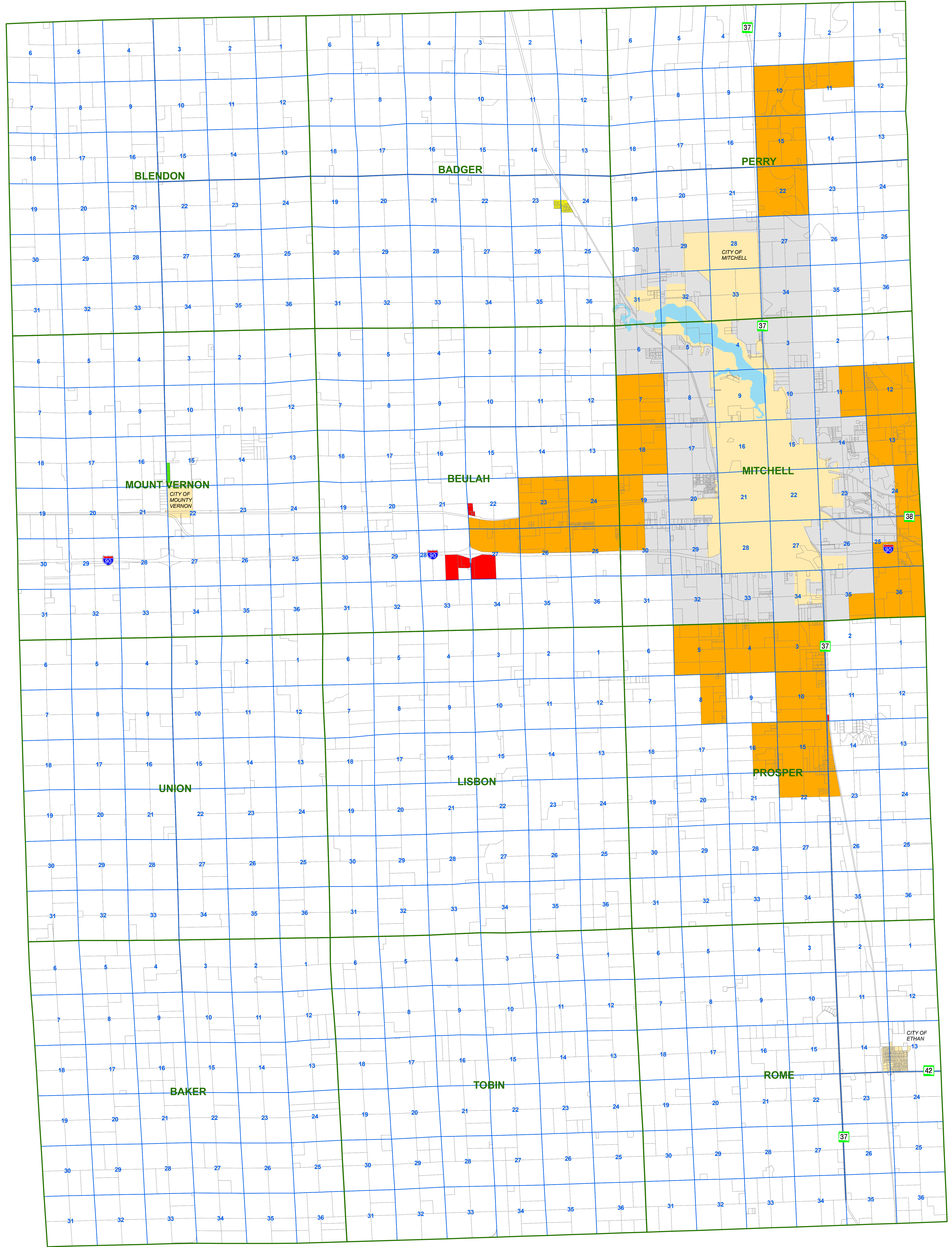


394 AVE 395 AVE 396 AVE 397 AVE 398 AVE 399 AVE 400 AVE 401 AVE 402 AVE 403 AVE 404 AVE 405 AVE 406 AVE 407 AVE 408 AVE 409 AVE 410 AVE 411 AVE 412 AVE

244 ST
245 ST
246 ST
247 ST
248 ST
249 ST
250 ST
251 ST
252 ST
253 ST
254 ST
255 ST
256 ST
257 ST
258 ST
259 ST
260 ST
261 ST
262 ST
263 ST
264 ST
265 ST
266 ST
267 ST
268 ST



OFFICIAL ZONING MAP

Davison County, South Dakota

This is to certify that this is the Official Zoning Map referred to in Section 401, of Ordinance No. 121404-1, of Davison County, South Dakota, adopted this 14th day of August 2009, as provided for under SDCL 11-2.

Jerry Fischer
Chairman

Susan Kiepkke
Auditor

Legend

- TOWNSHIP ZONING
- SECTION
- LAKE
- AGRICULTURAL
- CITY LIMITS
- AGRICULTURAL RESIDENTIAL
- ETJ
- PLATTED TOWN SITE RESIDENTIAL DISTRICT
- RURAL COMMERCIAL
- RURAL ESTATES

This map is intended for general planning purposes only. This map may or may not accurately represent the actual conditions as they exist today. Any decisions made using this map should be field verified.

SOURCE: Davison County Zoning Department
SDDOT GPS Road Centerline
Davison County GIS

Prepared By: Planning & Development District III
October 2009

