



Davison County
Emergency Management
200 E. 4th Ave.
Mitchell, SD 57301-2631
Phone (605) 995-8615
Fax (605) 995-8642



The Davison County Search & Rescue Building, which includes the south 3 bays of the east building located on the HWY Department grounds at 1224 W. 5th Ave.

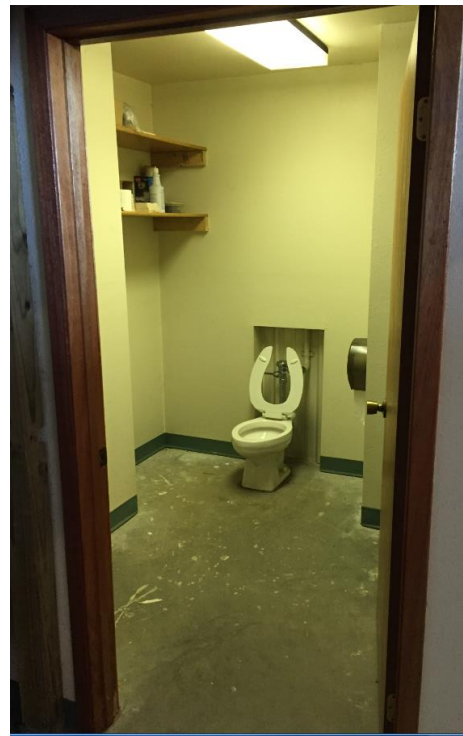
- Built in 2005
- 4,245 Sq. Ft. + loft area (SAR side)
- Large garage door = 16'x16' ; two small garage doors = 14'x12'
- Concrete Floor
- Heated/Insulated
- Meeting area w/table and chairs
- Restroom



Meeting Area under Loft in back of shed



Bathroom in the SE corner



The Davison County Search & Rescue Mobile Emergency Operations Center (MEOC):

- Year: 1994
- 37' x 8'
- 3 Laptop Computers (2015)
- Wifi
- Brother MFC printer/fax/scanner
- Restroom/Sink
- Radio Bank with 25 digital and 37 analog radios



Main Communication Area



Back Computer and Radio Area



Radio Docking/Charging Area



Radio & Color Printer/Scanner



Wi-Fi and Telephone Area



Toilet/Sink Area



65 KW Generator on Wheels

- Transportable w/ hookup capabilities
- 2 5/16" Ball
- Fuel Type: Diesel



Plug to hook Generator to building (Fairgrounds)



Control Panel



Honda Generators (8 total)

- Transportable
- Fuel Type: Gas



Search and Rescue White Dodge Pickup

- Primary Use: Haul Equipment Trailer
- Year: 2005
- Seats 5
- iPad with built-in Wi-Fi
- Hitch
- Light bar
- Bumper, winch set (new in 2015)



Davison County Search & Rescue Equipment Trailer:

- 16' Long x 7' 9" Wide
- 2 5/16" Ball
- 16" Tires (new)
- Trailer lights w/4 flat and 6 pin adapter
- Jack
- Safety chains



Side 1 of Equipment Trailer #1



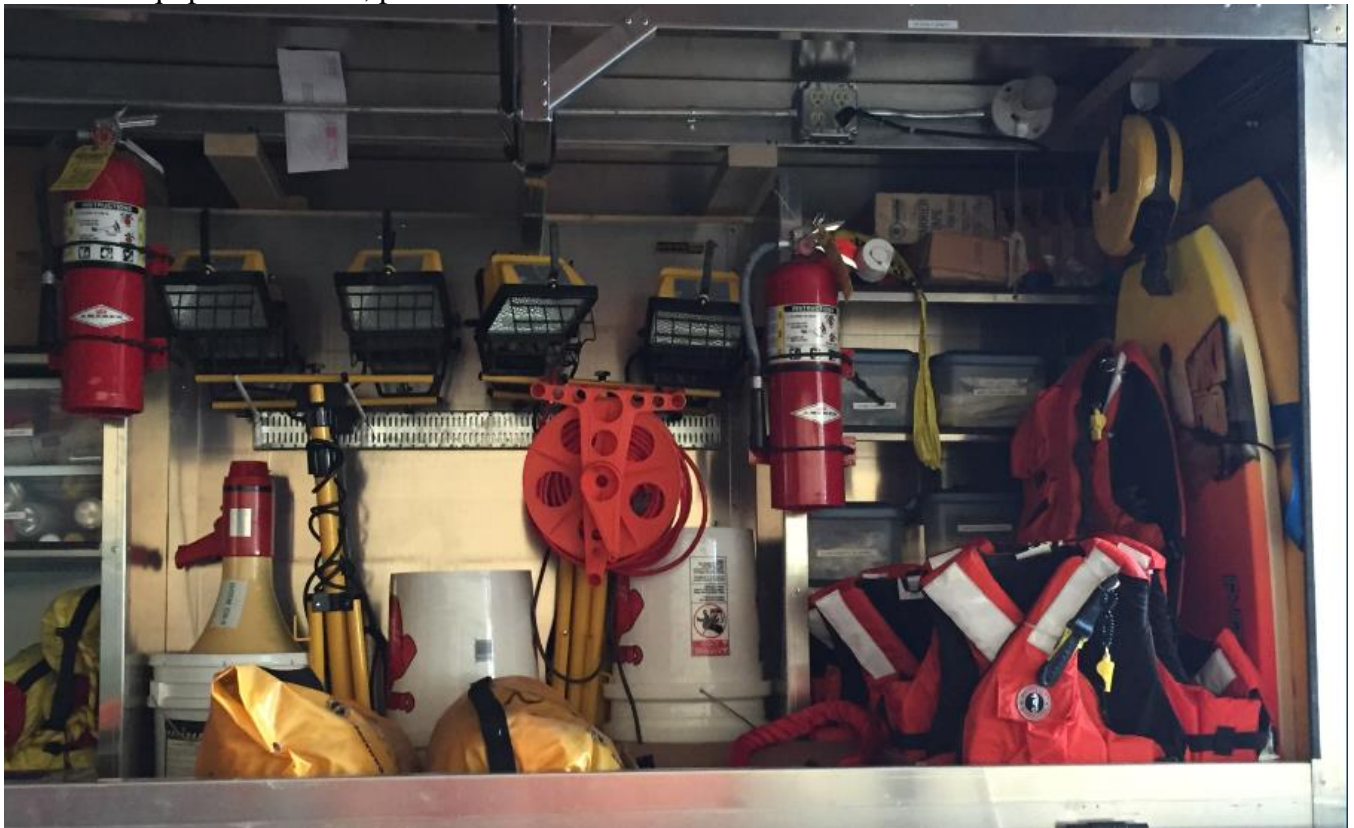
Side 1 of Equipment Trailer #2



Side 1 of Equipment Trailer #3



Side 2 of Equipment Trailer, picture 1



Side 2 of Equipment Trailer, picture 2



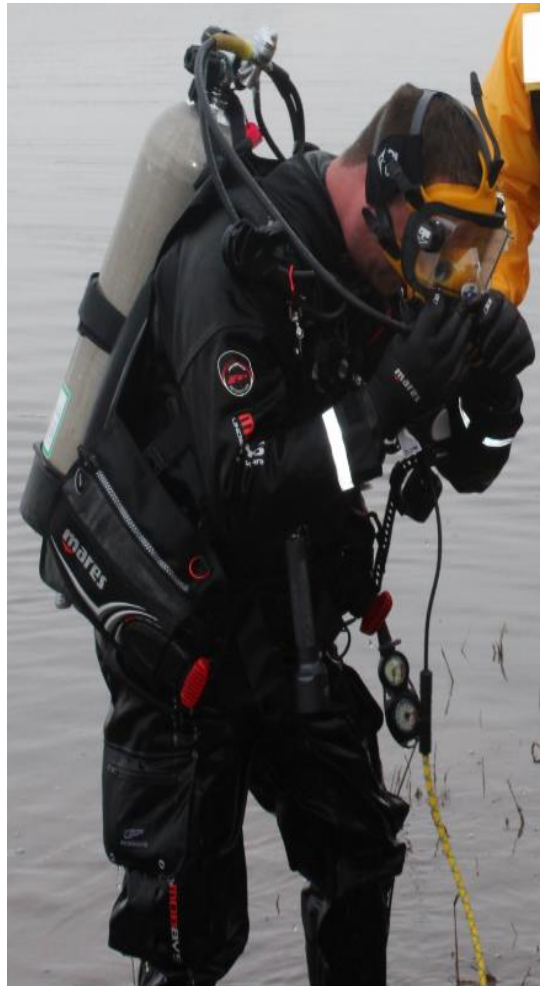
Side 2 of Equipment Trailer, picture 3



4 Mustang Ice Suits



6 Full Sets of Dive Gear



DJI Inspire I Drone with Forward Looking Infrared (FLIR)



Phantom3 Test Drone



Emergency Management/Search and Rescue Side-by-Side Ranger 1000
2019 Aluma 20' Tilt Bed Trailer, tandem axle, 2" ball

- Primary Use: Support vehicle
- Year: 2018
- 14" Tires in summer months, tracks in winter
- Automatic with manual power steering
- Bumper, winch set
- Seats 4
- Street legal/licensed
- Gurney Stretcher mounted in the bed.



Emergency Management/Search and Rescue Side-by-Side Rhino

- Primary Use: Support vehicle
- Year: 2010
- 13" Tires
- Automatic with manual power steering
- Bumper, winch set
- Seats 2
- Street legal/licensed
- Open bed for hauling



Search and Rescue Suburban

- Primary Use: Haul light sets and generators
- Year: 1999
- iPad with built-in Wi-Fi
- Hitch
- Light bar
- Seats 5



Search and Rescue Durango

- Primary Use: Storm Spotting
- Year: 2007
- iPad with built-in Wi-Fi
- Hitch
- Light bar
- Seats 5



Search and Rescue Thiokol Snow Cat

- Primary Use: Snow rescue during large snow events
- Year: 1966
- Seats 2 with large space in rear



Search and Rescue Light Set Trailer

- Primary Use: Transport (12) DEM light units and (3) generators for disaster response
- Year: 1989
- 14' Long x 8' 4" Wide
- 2" Ball
- 11" Tires
- Safety straps



Decontamination Trailer

- Primary Use: Provide a decontamination site for HAZMAT emergencies.
- Year: 2000
- 18' Long X 8' Wide
- 16" Wheels
- 2" Ball
- Includes:
 - Shower area
 - Bathroom area
 - Spare Tire
 - Supplies



CONEX

- Primary Use: Storage of additional SAR items
- 40' Long x 8.5' Wide
- Includes:
 - (6) Additional Light Sets
 - (10,000+/-) Sand Bags
 - Other miscellaneous items



Inside Conex



Sandbag Cones inside Conex



Sandbags inside Conex



Tent Trailer (owned by the State Office of Emergency Management)

- Primary Use: Storage and Transport of emergency response resources
- Year: 2000
- 2" Ball
- 16" Tires
- 18' Long x 8' Wide
- Includes:
 - Large tent (Site shelter/cover for responders)
 - Cups, Rubber/latex gloves, Gowns, Hand sanitizer, Trash bags
 - Sink
 - (40) Cots
 - (140) Blankets
 - (80) Pillows
 - (85) Sleeping Bags
 - (2) 30'X60' Plastic Tarps



Items inside the Tent Trailer, front area



Boat Trailer

- Primary Use: Boat and Motor Transport
- Year: 2014
- 16" Tires
- 24' Long x 8' Wide
- 2 5/16" Ball
- Includes
 - Boat
 - Boat Motor
 - Dive Gear
 - Gas can and other boat accessories



14' Inflatable Boat



Boat Motor



American Red Cross Trailer (Owned by American Red Cross, located at S.A.R.)

- Primary Use: Disaster response/recovery, only used by ARC personnel
- Parked on the south side of the SAR building
- 1 7/8" Ball
- Includes:
 - (70) Cots
 - (70) Blankets
 - (2) Boxes of 16 comfort kits (32 total)
 - (8) Clean up kits
 - (2) Cambro
 - (1) Box of shelter kits (10 total)

